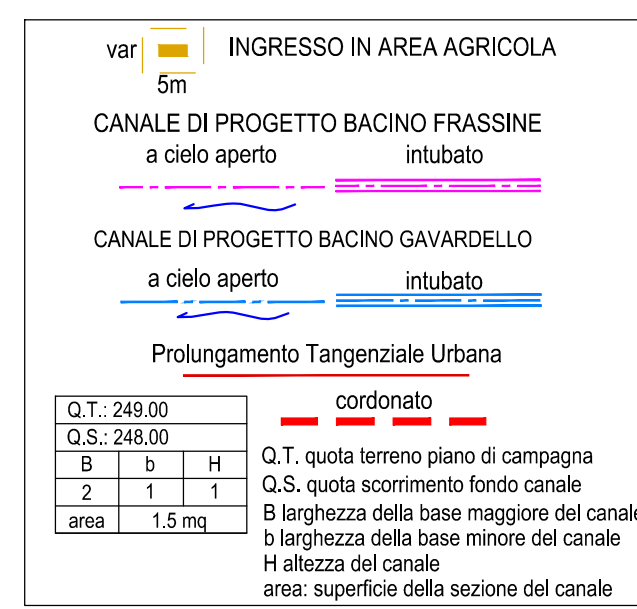
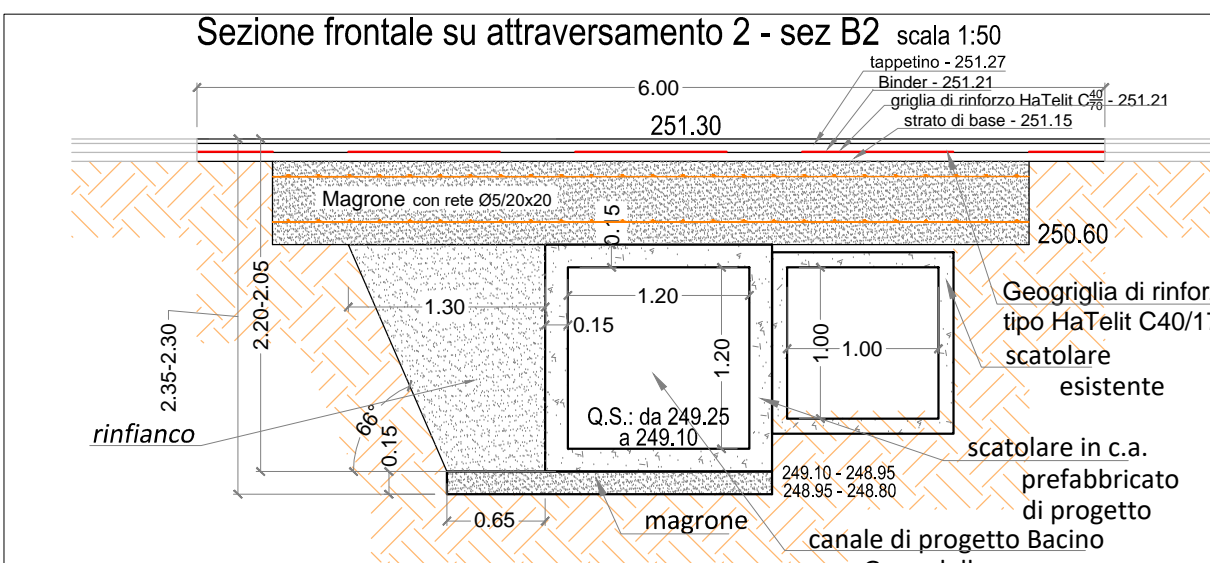
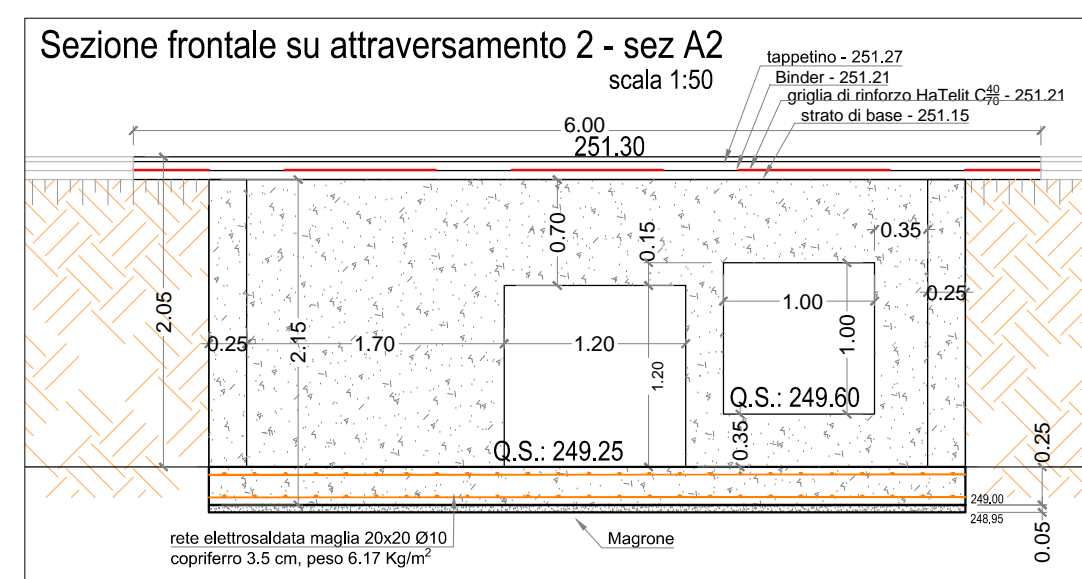
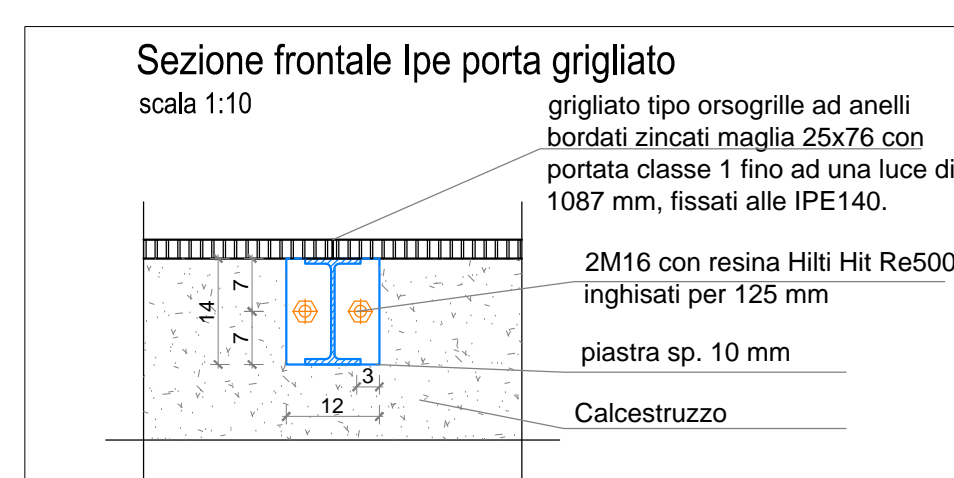
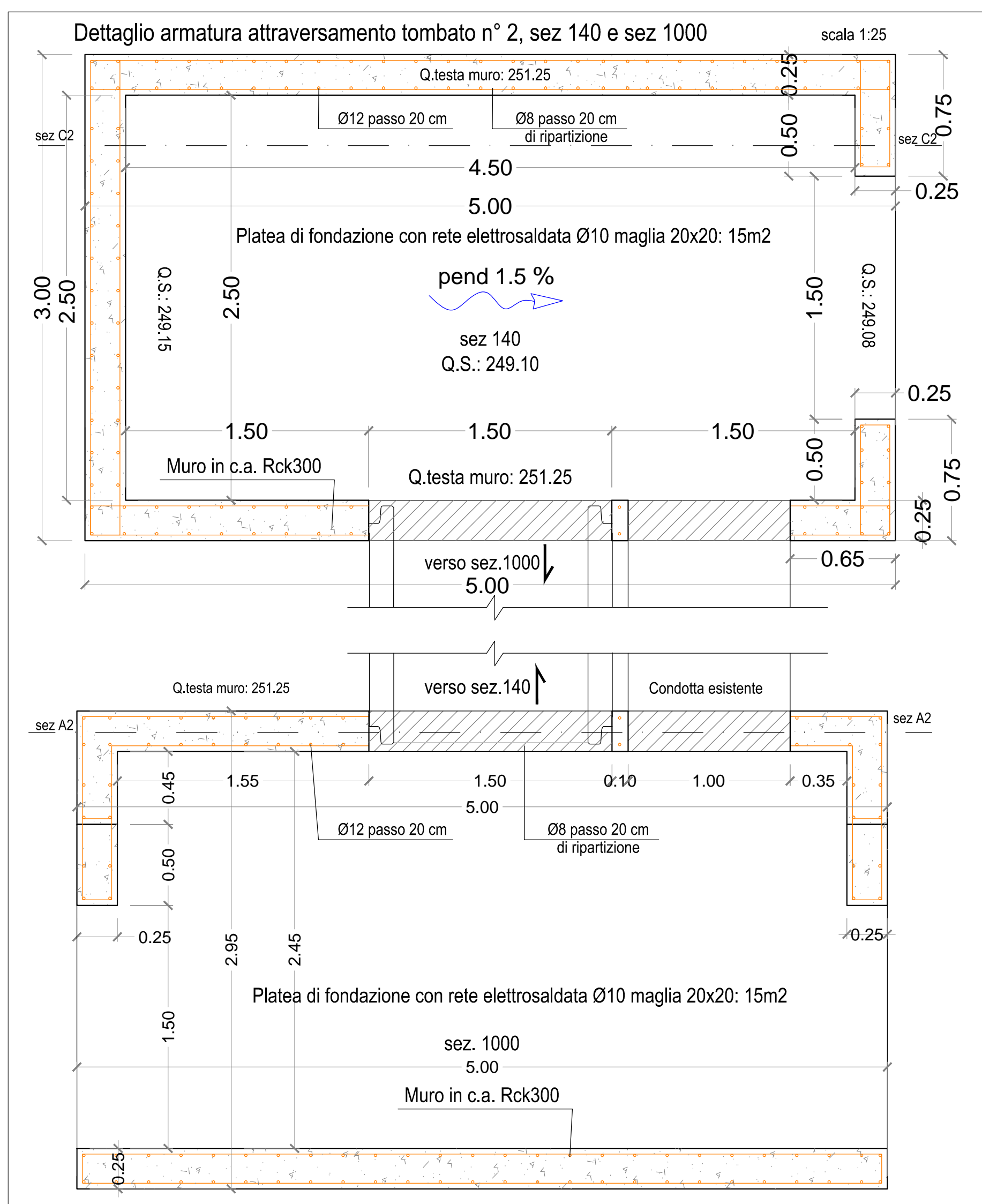
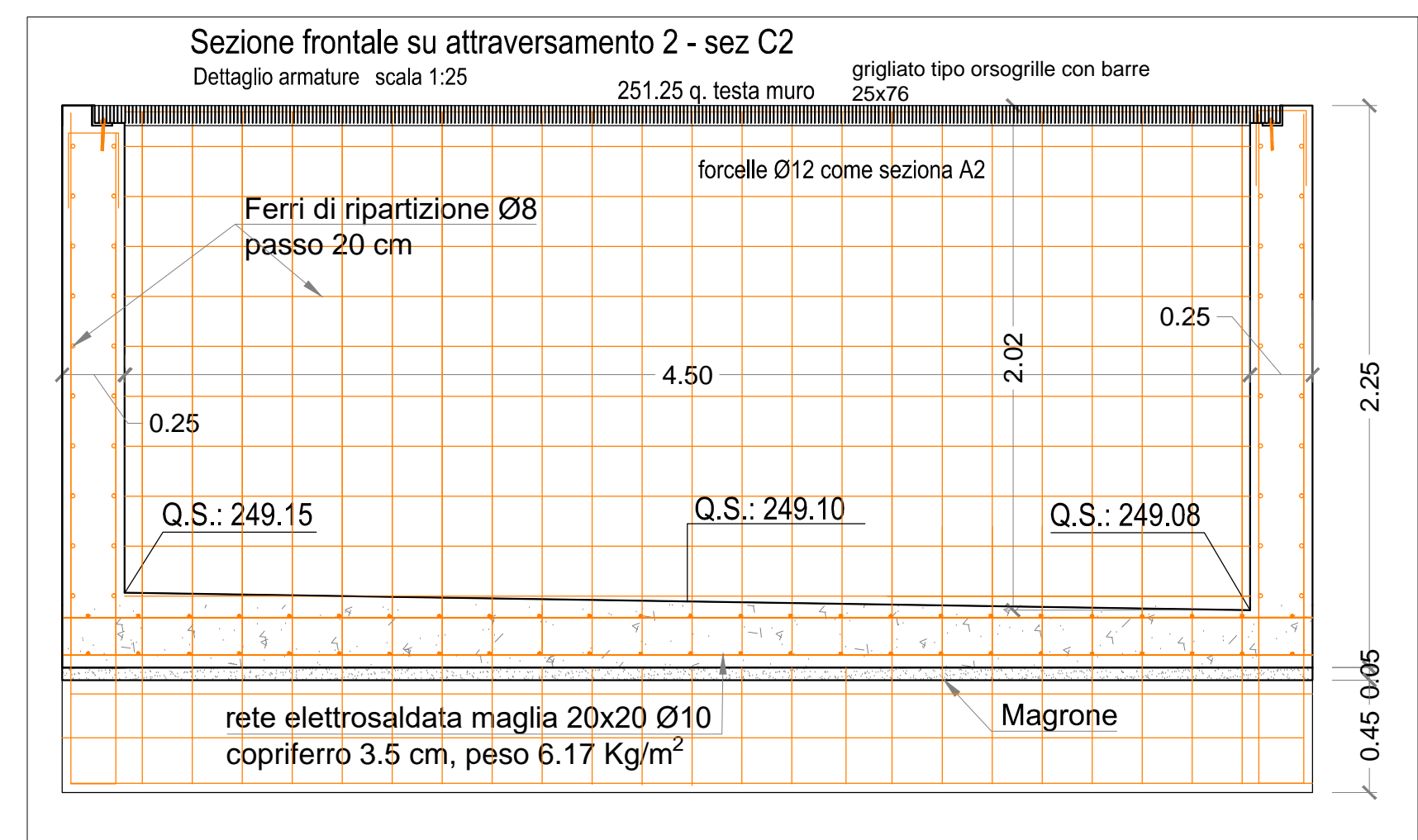
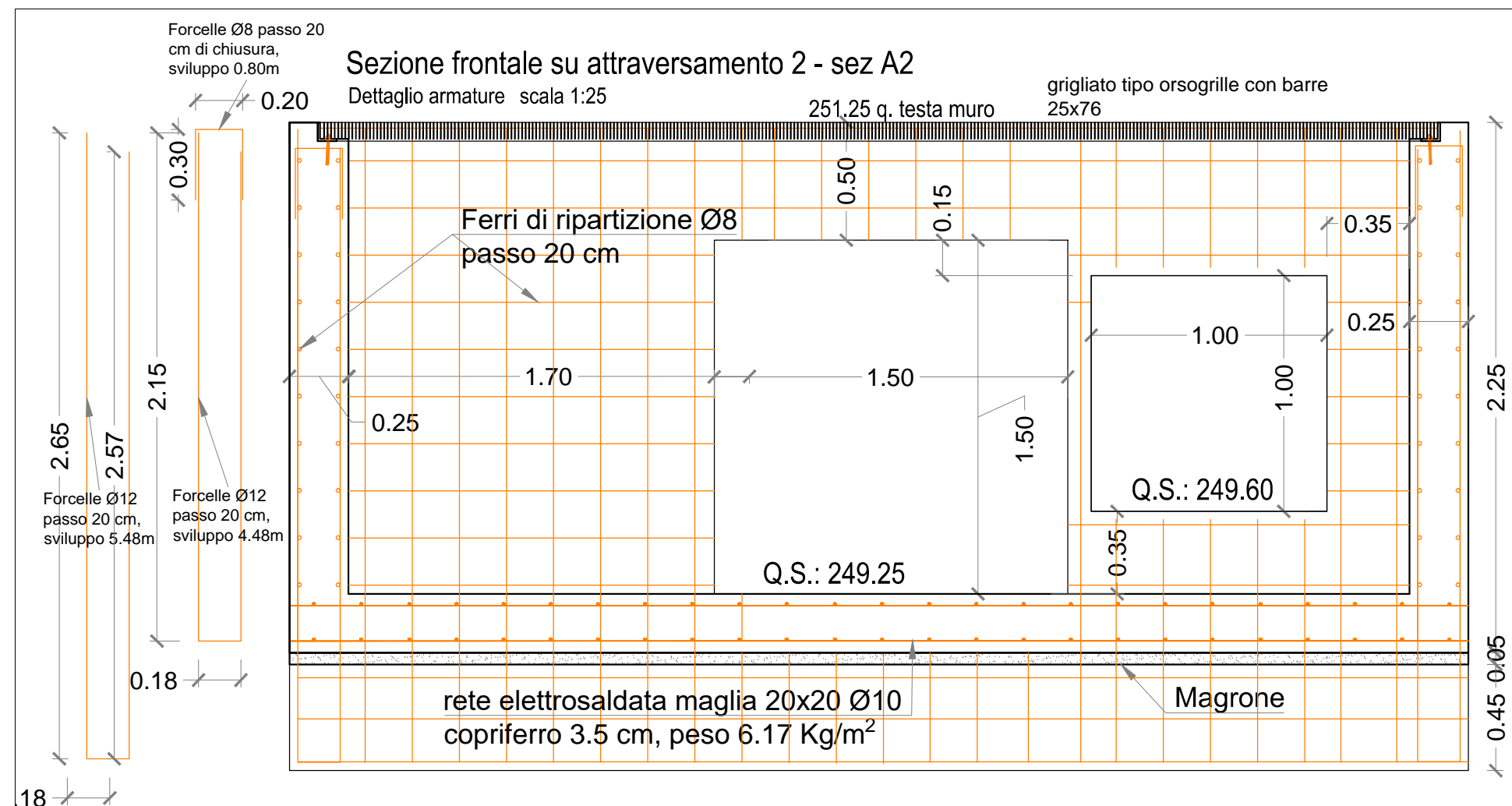
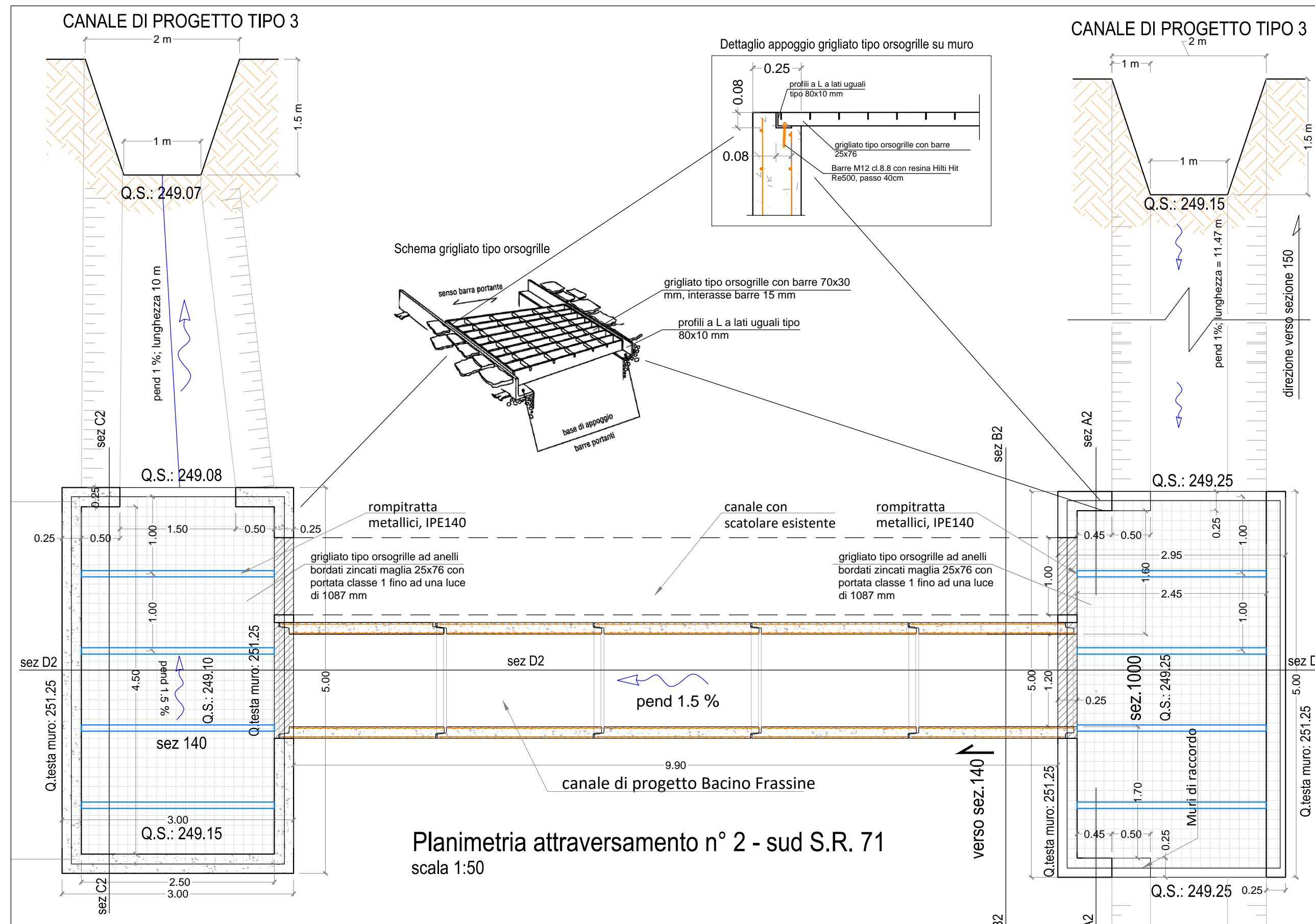
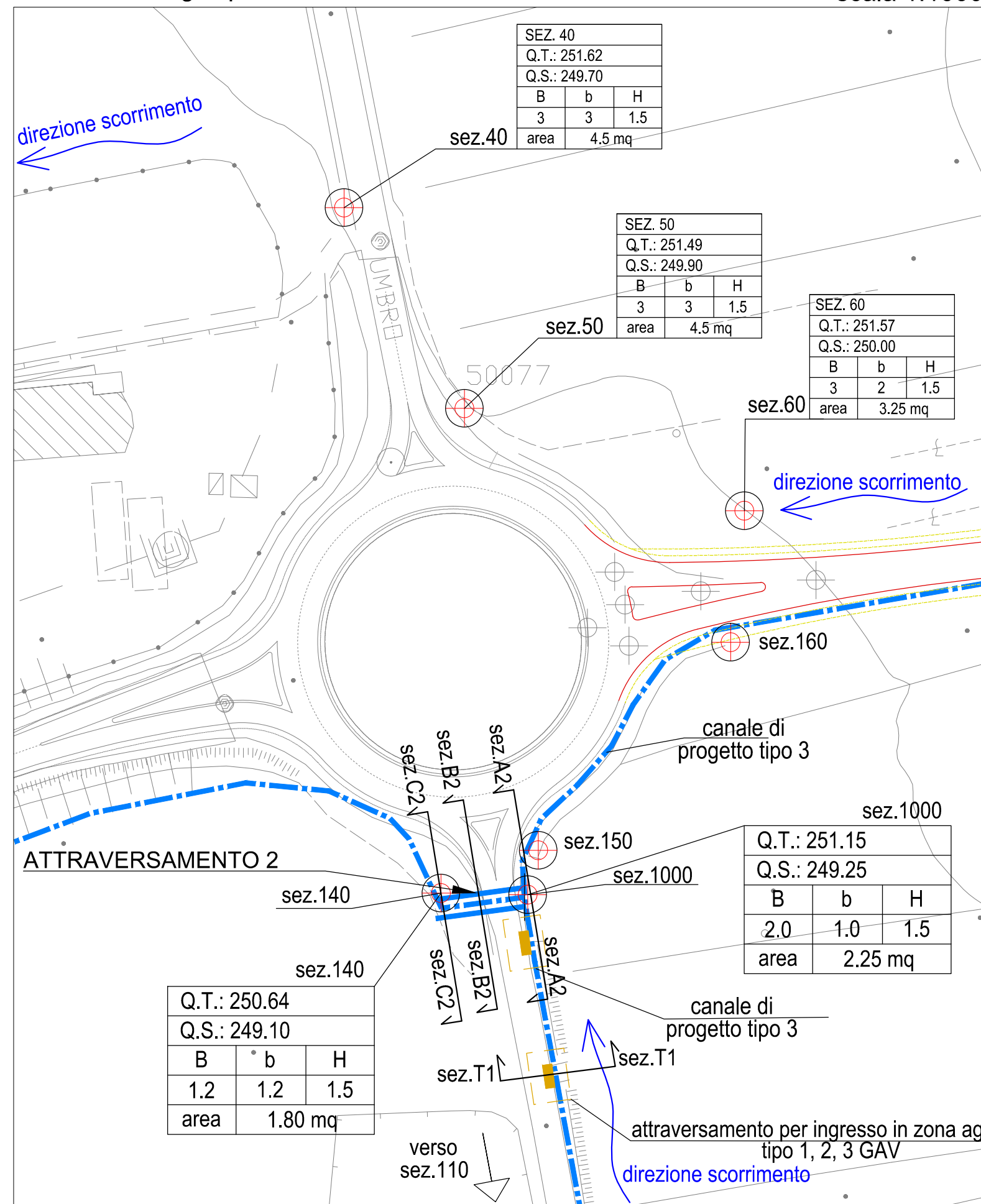


scala 1:1000



REQUISITI calcestruzzo e acciaio in opera
Classe di resistenza del calcestruzzo: C25/
Acciaio per armatura: B450C
Durabilità contro la corrosione: XC4-XD2-XS1
Durabilità al gelo disgelo: XF1

REQUISITI SCATOLARI prefabbricati
Carico mobile per ponti di 1a categoria
Classe di resistenza del calcestruzzo: C40/50
Acciaio per armatura: B450C
Durabilità contro la corrosione: XC4-XD2-XS1-XA
Durabilità al gelo disgelo: XF1

